

# Laceys.tv

*QUALITY ELECTRONICS FOR THE RECEPTION OF TELEVISION*

## CATALOGUE 108

- ANTENNAS & MOUNTING HARDWARE
- AMPLIFIERS & MODULATORS
- A/V LEADS, CABLE, CONNECTORS, HAND TOOLS & OUTLET PLATES
- DATA PRODUCTS
- DIPLEXERS, FILTERS & PASSIVES
- INSTRUMENTS
- MOUNTING BRACKETS & CABINETS
- COMMERCIAL MATV, SMATV & CATV
- CCTV
- SATELLITE EQUIPMENT
- RECEIVERS

# 32 YEARS OF EXPERTISE & LEADING BRANDS

Australian owned and operating for more than 32 years, Lacey's.tv continues its dedication to sourcing technologically advanced products and is the sole importer of some of the world's most important and recognised television reception brands.



**FRACARRO**

- Television Antennas
- Antenna Mast Amplifiers
- Splitters / Taps / Couplers
- Digital TV Modulators

**FRACARRO** is the market leader in designing and producing products for excellence in TV Reception.

Italian design, engineering and manufacturing, Fracarro have the experience and technological expertise in manufacturing acquired over 77 years in business.

Fracarro is Europe's largest Antenna manufacturer with a significant share of the Australian TV Antenna market, long the choice of installers working in the most difficult reception areas.

Fracarro also manufacture a broad range of quality MATV products and these have been employed successfully in headends across Australia for almost 20 years.



- Security Cameras
- Network Video Recorders
- Digital & Analogue HD Video Recorders
- Cabling
- Mobile application & support

**SECURITY INDUSTRIES** represents a wide range of CCTV products including the latest IP and security cameras, network and digital video recorders.

**LABGEAR**

- TV Signal Meters
- Taps

**LABGEAR** brand is synonymous with quality terrestrial TV and satellite TV signal meters for domestic and commercial MATV applications.



- TV Mounting Hardware
- TV Flyleads
- TV Coaxial Cable
- Splitters for TV & Satellite
- Connectors & Adaptors
- HDMI Leads & Accessories

**AERIAL INDUSTRIES** brand represents a diverse range of products covering TV reception accessories, cabling and AV accessories.

**OGG LABS**

- Digital TV Modulators

**OGG LABS** brand was founded with a vision to achieve technologically advanced product solutions for common problems associated with television reception.

OGG LABS is committed to delivering solutions for digital content, specialising in DVB-T and HDMI products for TV.



- Digital TV Modulators
- TV Brackets
- HD Television Set Top Boxes
- Audio Video Senders

**healing** is one of Australia's original and iconic consumer electronic products brands. Extensive testing and development work invested in healing products performed at our engineering division has assured an outcome of outstanding performance and high reliability.

# Instruments

## Test Instruments

Unaohm Professional Instruments.....	92–93
Labgear Digital & Analogue Television Analyser.....	94
Labgear Digital Satellite Analyser.....	95

## Budget Instruments & Accessories

Satellite Meter, Satellite Finder.....	96
TV Signal Finder.....	96
Angle Finder.....	96

Noise Generator.....	96
----------------------	----

Optical Power Meters & Light Source.....	97
--	----

CCTV Tester.....	98
------------------	----

## Instrument Batteries & Chargers

AC Battery Charger & DC Car Chargers, Replacement Batteries, Protective Bag.....	98
---	----



## TEST INSTRUMENTS

### UNAOHM PROFESSIONAL

**UNAOHM**

AP201S



### DVBS/S2

SATELLITE

#### DIGITAL MEASUREMENTS INCLUDE:

CH-BER (PRE VITERBI),  
PV-BER (POST VITERBI),  
MER, RS-UNCORRECTED, NM, CSI,  
SNR & EVM, CONSTELLATION DISPLAY FOR VERSION  
CHOSEN

#### AP201S Main Features

<b>Frequency Range:</b>	Continuous 45–2250 MHz
<b>Spectrum Analyser:</b>	Real Time — 2 Markers
<b>MPEG2:</b>	MPEG2 decoder
<b>DISEqC:</b>	1.1; 1.2 (ROTOR); 2.0; SCR
<b>Data-Logger:</b>	5 plans containing 50 programs each 1500 Measures Capability
<b>Monitor:</b>	Colour LCD 5.7" 320x240, High Brightness
<b>Battery:</b>	Li-Ion, more than 4h Autonomy; 4h charge time
<b>"CLC" Function:</b>	Calculation of cable length from the measurement point to the fault point (optional noise generator required)
<b>"TP-Sat" Function:</b>	Pre-stored satellite table to recall transponders directly
<b>AER:</b>	Adaptive Equaliser Response for echo & SFN analysis. Available only for DVB-T & DVB-C, range to 67kms.

#### VERSION

#### STANDARD EQUIPMENT

#### AP201 S PLUS (DVB-S)

- QPSK/8PSK module for DVB-S/DVB-S2 digital measurements
- MPEG2 module with NIT (Network Information Table)
- DVB-T virtual measurements
- DVB-C virtual measurements
- Reinforced nylon bag

#### OPTIONS

ITEM	DESCRIPTION
<b>S85-65</b>	5–65 MHz Converter module (fitting at factory only)
<b>NG96F</b>	Internal Noise Generator
<b>FP2E</b>	Battery charger for car lighter

Ask about our Fibre Optic Adaptor Kit.

#### SPARE PARTS

ITEM	DESCRIPTION
<b>BS14.4Li</b>	Li-Ion battery pack
<b>BCH16/3,8</b>	Battery charger
<b>C-1001</b>	Reinforced nylon bag

**UNAOHM**

DG OHM COMPACT



## DVBS/S2

SATELLITE

## DVBT/S2

TERR ESTRIAL

### DIGITAL MEASUREMENTS INCLUDE:

CH-BER (PRE VITERBO),  
 PV-BER (POST VITERBO),  
 MER, RS-UNCORRECTED,  
 CSI, TNM (FOR DVB-C,  
 DVB-T2/T/H, DVB-S2 / S),  
 DISEQC: 1.1, 1.2 (ROTOR) , 2.0  
 SNR & EVM, CONSTELLATION DISPLAY FOR VERSION  
 CHOSEN

### DG-OHM COMPACT Main Features

<b>Frequency Range:</b>	Continuous 45–2250 MHz
<b>Spectrum Analyser:</b>	Real Time — 2 Markers
<b>MPEG2:</b>	MPEG4 + MPEG2 decoder
<b>DISEqC:</b>	1.1; 1.2 (ROTOR); 2.0; SCR
<b>Data-Logger:</b>	5 plans containing 50 programs each 1500 Measures Capability
<b>Monitor:</b>	Colour LCD 5.7" 320x240, high contrast
<b>Battery:</b>	Li-Ion, more than 5h Autonomy; 4h charge time
<b>Mains Power Supply:</b>	External Power Supply
<b>"CLC" Function:</b>	Calculation of cable length from the measurement point to the fault point (optional noise generator required)
<b>"TP-Sat" Function:</b>	Automatic direct recall tuning of transponders
<b>AER:</b>	Adaptive Equaliser Response for echo analysis. Available only for DVB-T & DVB-C, range to 67kms.
<b>Lte Function:</b>	Lte signal interference analysis toward DVB-T channels

VERSION	STANDARD EQUIPMENT
<b>DG-OHM FULL HD</b>	<ul style="list-style-type: none"> <li>- COFDM module for DVB-T digital measurements</li> <li>- QPSK/8PSK module for DVB-S/DVB-S2 digital measurements</li> <li>- MPEG4 + MPEG2 module with NIT (Network Information Table)</li> <li>- DVB-T/T2 virtual measurements</li> <li>- DVB-C virtual measurements</li> <li>- Reinforced nylon bag (rucksack model)</li> </ul>
<b>DG-OHM HD</b>	<ul style="list-style-type: none"> <li>- COFDM module for DVB-T digital measurements</li> <li>- QPSK/8PSK module for DVB-S/DVB-S2 digital measurements</li> <li>- MPEG4 + MPEG2 module with NIT (Network Information Table)</li> <li>- DVB-T virtual measurements</li> <li>- Reinforced nylon bag (rucksack model)</li> </ul>

### OPTIONS

ITEM	DESCRIPTION
<b>NG500</b>	External Noise Generator
<b>FP2E</b>	Battery charger for car lighter
<b>FCV 300</b>	2-3 GHz Down converter

### SPARE PARTS

ITEM	DESCRIPTION
<b>BS14.4Li</b>	Li-Ion battery pack
<b>BCH16/3,8</b>	Battery charger
<b>C-1001</b>	Reinforced nylon bag



# Instruments

## LABGEAR DIGITAL & ANALOGUE TELEVISION ANALYSER

**LABGEAR**

DAT103

FUNCTION  
OPTIMISED  
FOR  
ADJACENT  
CHANNELS



5, 12 or  
24V DC  
MAST AMP  
POWER

**DVBT**  
TERRESTRIAL

Test and measurement of complete Digital DVB-T and Analogue television reception systems. Useful in the field or a laboratory, from antenna alignment through MATV systems to broadcast.

### DAT103 PROVIDES THE FOLLOWING MEASUREMENTS:

- Modulation Error Ratio (MER) and Noise Margin (NM) total quality quantification, Full & Expanded Spectrum, Constellation and Echo functions.
- Bit Error Ratio (BER) before Viterbi corrector.
- Bit Error Ratio (BER) after Viterbi corrector.
- Damaged packet count, after Reed-Solomon corrector.
- Constellation diagram, a powerful signal evaluation tool.
- Echo diagram estimation of reflections distance and level.
- Lock signal status indicator.
- Digital Channel Power in dBuV or dBm.
- Extensive Analogue TV measurements.
- 5, 12 or 24V DC output voltage to power masthead amplifiers whilst measuring current draw and actual voltage.
- Internal Li-Ion battery provides up to 3 hours autonomy.
- Data Logging and useful PC functions.
- A Quick Reference Card is included.

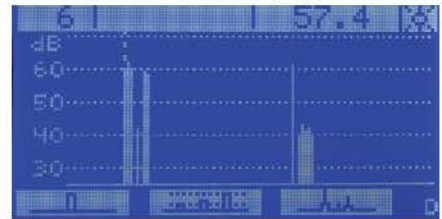
Main Menu



Detailed Signal Level



Full Screen Display



Expanded Spectrum



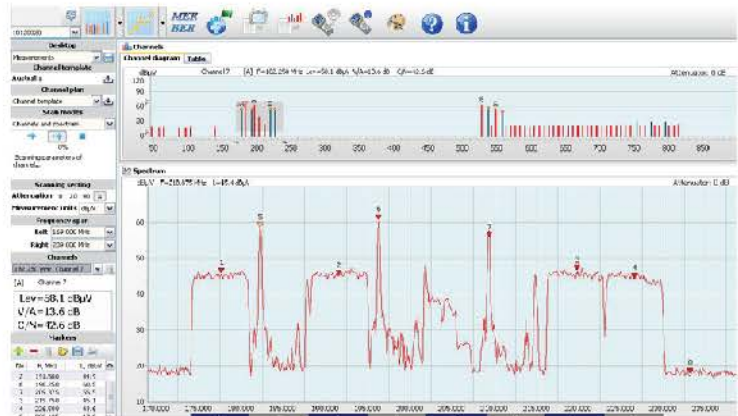
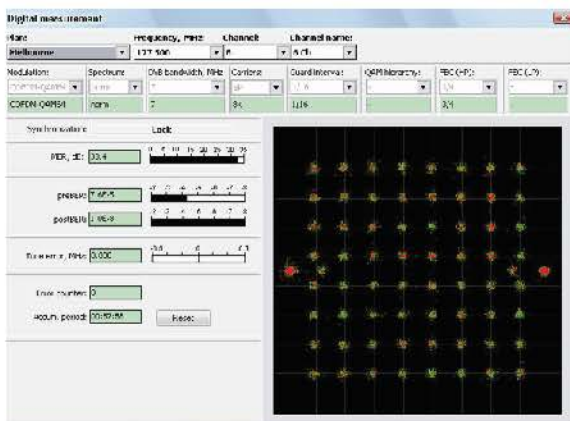
MER BER +



Constellation



### DAT103 Tools Software included with each meter, screen views include:





## LABGEAR DIGITAL SATELLITE ANALYSER

**LABGEAR**

DAS202

POWERFUL,  
RELIABLE  
HANDHELD



Pre-programmed with all satellites available in Australia. Optimised adjustment and testing of complete Digital DVB-S2 Satellite television reception systems. Useful in the field or a laboratory, from dish pointing through SMATV systems to broadcast.

### DAS202 PROVIDES THE FOLLOWING MEASUREMENTS:

- Modulation Error Ratio (MER & NM) total quality quantification.
- Bit Error Ratio (BER) before & after Viterbi corrector.
- Bit Error Ratio (BER) before & after Low Density Parity Check (LDPC) decoder.
- Real time Spectrum and Constellation array readouts.
- Lock signal sync. status indicates service found.
- Transponder Signal Level in Digital Channel Power.
- Frequency display of both Transponder Frequency (TF) and Intermediate Frequency (IF), simultaneously.
- LNB Local Oscillator (LO) frequency error in MHz.
- Unique Compass identifies actual satellite location.
- Data Logging and useful PC functions.
- Expanded spectrum permits precise cross-pole adjustment.
- A Quick Reference Card is included.

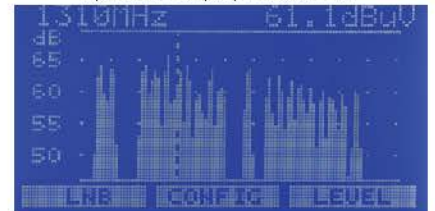
Automatic Satellite Locator



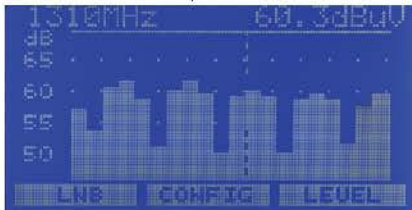
Measurement 1



Spectrum Display In Real Time



200MHz Expanded View



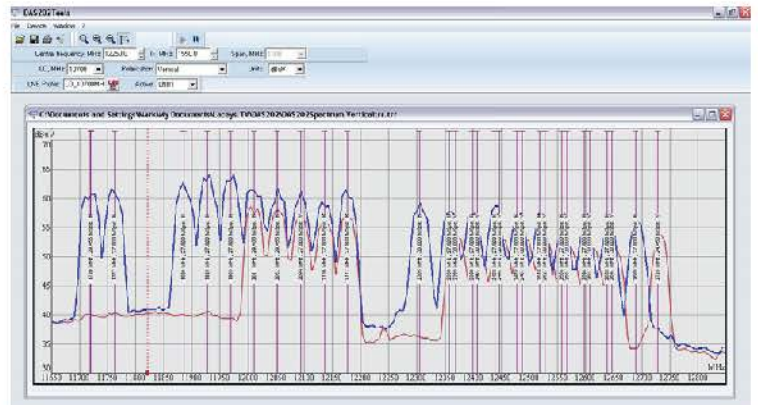
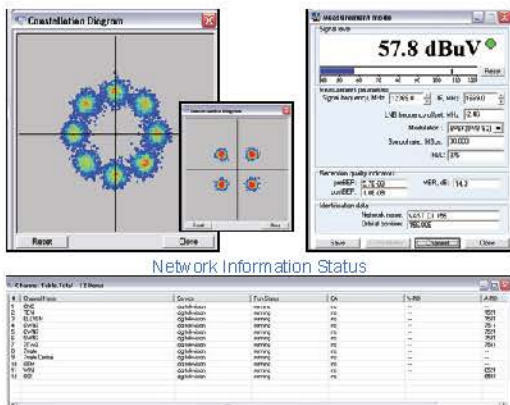
Measurement 2



Constellation QPSK & 8PSK



### DAS202 Tools Software included with each meter, screen views include:



# Instruments

## BUDGET INSTRUMENTS & ACCESSORIES

**LABGEAR**

SQ722



**FAST & EFFECTIVE**

**DVBS2**  
SATELLITE

**Lock the correct Satellite! Indicates MER!**

- Completely re-designed to lock DVBS-2 streams — faster and more efficiently than the previous model.
- Instant response to changes in signal including VAST, no waiting.
- Indicates signal Quality and Strength.
- VAST, Optus C1 & D3 pre-programmed.
- Locks the right satellite, every time.
- Fast response makes alignment simple.
- Audible tone enables users to 'hear' the alignment.
- Powered directly from a set top box, no batteries required.
- Easy to read in daylight.

TV SIGNAL METER

**LABGEAR**

TC870C



- Comfy hand held shape.
- Measurement range 46–870 MHz.
- TV and FM demodulation via loud speaker.
- Channel plans include Australia, New Zealand and Australian CATV providers.
- Measures in dB $\mu$ V, dBm, dBmV.
- Level accuracy +/- 1.5dB, range 30–115dB $\mu$ V.
- Direct entry of frequency and FM demodulation permits FM antenna alignments.
- CATV Trunk-line voltage and C/N measurement.
- Rechargeable internal Ni-MH battery with low level warning.
- Includes a soft field bag with belt clip.

**Aerial Industries AI**

AITVF



**FOR CARAVAN & MOTOR HOMES**

- Align your television antenna in a few seconds.
- Simple and easy to use.
- LED's clearly indicate signal levels in dB $\mu$ V steps of 10dB.
- Compact and convenient shape that is easy to hold.
- Internal battery, receiver or external power options.
- Can be left connected for continuing signal indication.
- Measures 5–862MHz.

ANGLE FINDER

INC01



Locate your satellite by inclination angle. Each satellite slot has a different elevation. Once known you can't miss! Magnetic base helps Angle Finder stay on your feed arm.

## NOISE GENERATOR

**UNAOHM**

NG754X



Free standing with integrated attenuator and selectable 1KHz AM Modulation. Useful for checking Frequency Response, Return Loss (with P257 75 $\Omega$  bridge), filter alignment etc. Internal battery simplifies sweeping entire TV systems with 1KHz square wave modulation to help identify signal.

<b>Frequency Range:</b>	45 – 2,000MHz
<b>Output Level:</b>	Equal to 77dB $\mu$ V (-30dBm) on a 1MHz measurement bandwidth
<b>Attenuator:</b>	0–30dB in 2dB steps
<b>Attenuator Accuracy:</b>	$\pm$ 5dB 45 to 1,000MHz $\pm$ 1.5dB 1,000 to 2,000MHz
<b>Selectable AM Mod.:</b>	1KHz $\pm$ 5% square wave
<b>Attenuator Precision:</b>	$\pm$ 1dB @ 0dB
<b>Stability:</b>	$\pm$ 2dB to $\pm$ 20 $^{\circ}$ C
<b>Output Impedance:</b>	75 $\Omega$
<b>Connector:</b>	BNC
<b>Power:</b>	12V DC 800mAh internal NiCad included, 18–24V DC via External supply / charger included
<b>Field Case:</b>	Included



## OPTICAL POWER METERS & LIGHT SOURCE

Robust handheld Optical Power Meters and Light Source. Essential for checking power levels in Fibre Optic equipment.

### ULTRA COMPACT OPTICAL POWER METER FHP12



<b>Wavelengths:</b>	850nm, 1300nm, 1310nm, 1490nm, 1550nm and 1625nm
<b>Display Range Resolution:</b>	+10 to -70dBm @1550nm
<b>Optical Interface:</b>	2.5mm universal FC, SC or ST female
<b>Detector Type:</b>	InGaAs
<b>Power Supply:</b>	2 x AAA Batteries
<b>Battery Operating Time:</b>	About 80 hours
<b>Weight:</b>	70g
<b>Dimensions:</b>	(L) 120mm x (W) 33mm x (H) 30mm

A compact pen type Optical Power Meter that provides stable measurement of 850nm, 1300nm, 1310nm, 1490nm, 1550nm and 1625nm wavelengths. Power levels between +10 and -70dBm at 1550nm can be comfortably measured by FHP12.

Powered by 2 x AAA batteries FHP12 is fully independent and can be ready to use at just a moments notice.

Applications include maintenance and testing of telecommunication networks as well as fibre cable manufacture. Includes a soft pouch with belt clip.

### OPTICAL POWER METER OPM6010



<b>Wavelengths:</b>	850, 980, 1310 or 1550nm
<b>Sensitivity / Input Power:</b>	2-60 ~ dBm +10 dB
<b>Uncertainty / Stability @ 20°C:</b>	+ or -5%
<b>Optical Interface:</b>	FC adaptor
<b>Detector / Emitter Type:</b>	InGaAs
<b>Power Supply:</b>	9V DC rechargeable battery
<b>Auto OFF Time:</b>	10 minutes
<b>Weight:</b>	250g
<b>Dimensions:</b>	150mm x 76mm x 26mm

### OPTICAL LIGHT SOURCE OLS7315



<b>Wavelengths:</b>	1310nm
<b>Sensitivity / Output Power:</b>	-6.5dBm +/- 0.5 dB
<b>Uncertainty / Stability @ 20°C:</b>	+ or -0.05dB in 15 minutes + or -0.10dB in 8 hours
<b>Optical Interface:</b>	SC/APC adaptor
<b>Detector / Emitter Type:</b>	Fabry-Perot LD
<b>Power Supply:</b>	9V DC rechargeable battery
<b>Auto OFF Time:</b>	Not applicable
<b>Battery Operating Time:</b>	8 hours
<b>Weight:</b>	160g
<b>Dimensions:</b>	150mm x 74mm x 25mm

# Instruments

## CCTV TESTER

IP, AHD, TVI, CVI & Analogue camera tester, wide viewing angle 3.5 inch touch screen. Designed for maintenance and installation of CatX and Coax cabled camera systems and other security equipment. 480 x 320 resolution enables display of Network, HD and Analogue cameras. Supports latest ONVIF profiles.

### MULTI-FUNCTION CCTV TESTER



CTR500

H.265



- 3.5 inch wide angle touch screen display, 480 x 320 resolution.
- H.265 and H.264, 4K mainstream video display.
- 5MP AHD test, 2592 x 1944P 12.5 / 20fps.
- UTP CatX cable tester.
- Built in Wi-Fi, create a WIFI hotspot.
- Power Over Ethernet (POE) voltage measurement.
- IP address scan searches for IP addresses on the network.
- IP discovery, shortcut button, drop-down menu.
- Dual window test, IP & Analog camera test.
- PING testing — check IP addresses of network devices.
- Time Domain Reflectometer (TDR) function allows user to measure cable lengths RJ45 for CatX cable and distance to breaks.
- Identify LAN cables at the network switch.
- Link Monitor checks whether IP addresses are occupied.
- DC12V 2A, PoE 48V DC power output.
- Rapid ONVIF, auto view video and create test report .
- 10 / 100 / 1000 Metre Ethernet, PoE, and Power monitoring.
- Full PTZ control for Pan, Tilt and Zoom cameras.
- 2800mAh Lithium Ion Polymer Battery, up to 4 hours service per charge.

## INSTRUMENT BATTERIES & CHARGERS



**BC75AC** Replacement AC battery charger for Unaohm S22, T40a, C30 and S48.

### REPLACEMENT BATTERIES

- BP3** Battery pack for TAM, SAM series.
- BP4** Battery pack for the TC870, TC870B, TC870C.
- BP5** Replacement battery for S22, T40a, C30 and S48.
- BP6** External optional battery for Unaohm handhelds.
- BP7** Li-Ion battery for AP series, 14.8V 4.8Ah.
- BP8** Li-Ion battery for DAT103 / DAS202, 7.4V 1.6Ah.
- BS1234** Unaohm battery, 12V 3.44Ah SLA.
- BS1272** Unaohm battery, 12V 7.2Ah SLA.



**BC12DC** DC car charger for DAT103 and DAS202.

**BC75DC** DC car charger for Unaohm handhelds.



**C20BAG** Protective bag for Unaohm S22, T40a, C30 and S48.



# Index of Products

## Symbols

3DG-2S2-2T 109  
3DGFLEX 109  
4E2 15  
4E3 15  
4E512F 14  
6D 14  
6DF 14  
6E6 14  
6E7 14  
6E12F 14  
6E512F 13  
6H1 14  
10/4753/R 16  
10/6269/R 16  
10BL5F 17  
10BL45F 17  
10F2734 16  
10F3546 16  
10F4769 16  
10RD4F 18  
10RD5F 18  
11D 14  
11E6 14  
11E7 14  
11E8 14  
11H 14  
11H1 14  
20/5461 16  
20ALFA 16  
20BL4F 17  
20BL5F 17  
20BL45F 17  
20DELTA 16  
20RD4F 18  
20RD5F 18  
76BGS36 43  
1405RB 58  
1405RW 58  
1407RB 58  
1407RW 58  
2030F 69  
2030SC 69  
2122.. 72  
2305.. 72  
2355.. 72  
2396.. 72

## A

A1PA 20  
AA2501 50  
AA2502 50  
AA2503 50  
AA2504 50  
AA3501 50  
AA3502 50  
AA3503 50  
AA3504 50  
AA3505 50  
AA3506 50  
AA3507 50  
AA3508 50  
AA3509 50  
AA3510 50  
AA3511 50  
AA6301 50  
AA6302 50  
AA6303 50  
AA6304 51  
AA6305 51  
AA6306 51  
AA6307 51  
AA6308 51  
AA6309 51  
AA6310 51  
AA6312 51  
AARC01 52  
AARC02 52  
AARC03 52  
AARC04 52  
AARC05 52  
AARC06 52  
AARC08 52  
AARC09 52  
AARC10 52  
AARC11 52  
ADSLFL01 77  
ADSLFL02 77  
ADSLFL03 77  
AFI112LTE700AUS 32  
AIA4 13  
AI6A 13  
AI23 142  
AIA86232 127  
AID65 142  
AID80 142  
AID90 142  
AIDCB 90  
AIDCBT 55  
AIFLP3 13  
AIL107T 143  
AIMA224E 30  
AIMA236E 30  
AIMS2W4 125  
AIMS2W8 125  
AIMS3W4 125  
AIMS3W8 125  
AIP2W 146  
AISP2 83  
AISP4 83  
AISW2 90  
AITP10 86  
AITP16 86  
AITP22 86  
AITVF 96  
AMP522AM 126  
AMP9762 33  
AMP9763 35  
AMP9763B 35  
AMP9764 34  
ANT1200A 20  
ANT3030810 20  
ANT3100510 14  
AP201S 92  
AP201 S PLUS 92  
AP201 S PLUS (DVB-S) 92  
AP2502 51  
AP3501 51  
AP3502 51  
AP6301 51  
AP6302 51  
AP6303 51  
AP6304 51  
AQUASEAL-1 23  
AQUASEAL-B 23  
AR1001 46  
AR1202 46  
AR1203 46  
AR1204 46  
AR1205 46  
AR1206 46

AR1207 46  
AR1208 46  
AR1209 46  
AR1230 46  
AR1250 46  
AR1307 47  
AR1310 47  
AR1330 47  
AR1350 47  
AR1403 47  
AR1407 47  
AR1518 47  
AR1530 47  
AR1550 47  
AR3309 47  
AR3318 47  
AR3350 47  
AR4309 47  
AR4310 47  
AR4318 47  
AR4330 47  
AR4350 47  
AR12051 46  
AR12063 46  
AR12065 46  
AR120610 46  
AR120615 46  
AS2010 59  
AS3106 59  
AS3200 59  
AS3501 61, 80  
AS3811 59  
AT2/.. 35  
AT75-20 88  
AT7520F 88  
AT7520M 88  
AVC3356 49  
AVYUV4RC 43

## B

BA7001 53, 139  
BA7002 53, 139  
BA7003 53  
BA7004 53, 139  
BA7005 53, 139  
BA7008 53  
BA7009 53  
BA7011 53, 139  
BA7016 53  
BA7017 53  
BA7022 53, 139  
BA7023 53, 139  
BA7024 53  
BA7025 53, 139  
BC12DC 98  
BC75AC 98  
BC75DC 98  
BC7003 53  
BC7007B 53, 139  
BC7007C 53  
BC7007D 53, 139  
BC7009B 53, 139  
BC7009C 53  
BC7014 53  
BC7015 53  
BCH16 92, 93  
BH900 22  
BKT193RU 37, 106, 123  
BLU220PLUS 18  
BLU420F 18  
BLU424F 18

BLU425F 18  
BLV4F 14  
BLV6F 14  
BM-MB 103  
BM-MRB 103  
BM-MS 103  
BMR3X 43  
BM-R25S 103  
BM-S50S 103  
BM-SEB 103  
BM-SES 103  
BM-SXS 103  
BM-VCRB 103  
BM-VCRS 103  
BP3 98  
BP4 98  
BP5 98  
BP6 98  
BP7 98  
BP8 98  
BR2-AA 116  
BR4-AA 116  
BS14.4U 92, 93  
BS20 88  
BS30 88  
BS1234 98  
BS1272 98  
BT1 69  
BT2F 69  
BT2PAL 69

## C

C5RB 57  
C6RB 57  
C7RB 57  
C7S1B 57  
C7S2B 57  
C8RB 57  
C10RB 57  
C20BAG 98  
C-1001 92, 93  
CA1 16, 17  
CA16 15  
CA215 33  
CA310 33  
CA311 33  
CA313 33  
CA730 34  
CAB6OUTPOWER 79, 105  
CAB6RUMINI 78, 104  
CAB8OUTPOWER 79, 105  
CAB9RUMINI 78, 104  
CAB10OUTPOWER 79, 105  
CAB12OUTPOWER 79, 105  
CAB15OUTPOWER 79, 105  
CAB18BP4U 105  
CAB19BP1U 105  
CAB19BP2U 105  
CAB19BP3U 105  
CAB19BP05 105  
CAB19BR1U 79, 105  
CAB19CAST 79, 105  
CAB19CFAN 79, 105  
CAB19CMR1 79, 105  
CAB19RP2U 79, 105  
CAB19RP4U 79, 105  
CAB19RP6U 79, 105  
CAB192U400SH 79, 106  
CAB1945SH 79, 106  
CAB1955H06 78, 105  
CAB1955H09 78, 105

# Index of Products

- CAB1955H12 78, 105  
CAB1960SH 79, 106  
CAB1960SS 79, 106  
CAB191506 79, 104  
CAB191509 79, 104  
CAB191512 79, 104  
CAB193002W 79, 104  
CAB193003W 79, 104  
CAB193004W 79, 104  
CAB193006W 79, 104  
CAB194506B 104  
CAB194509B 104  
CAB194512B 104  
CAB194515B 104  
CAB196020B 78, 104  
CAB196025B 78, 104  
CAB196030B 78, 104  
CAB196035B 78, 104  
CAB196042B 78, 104  
CAB196046B 78, 104  
CAB198042B 78, 104  
CABLETIDY 57  
CAD11 84  
CAD12 84  
CAD13 84  
CAD14 84  
CAPM25 21  
CAPM32 21  
CAPM38 21  
CAT5E/305 50, 75  
CAT5JOINER 77  
CAT6/305 50, 75  
CAT6/305F 50, 75  
CAT6A/305 50  
CAT6A/305F 75  
CAT6JOINER 77  
CB382P 26  
CB3825P 26  
CBK6 22  
CBK12 22  
CCBKIT 22  
CD12 84  
CD142 84  
CD144 84  
CD201 84  
CD202 84  
CD204 84  
CD262 84  
CD264 84  
CDBC 28  
CDIN2F 51  
CDIN2M 51  
CEF8 55  
CEM3-6 27  
CF-511 34  
CFB1212 22  
CFB1512 22  
CFB1812 22  
CFB2716 22  
CFD21B 142  
CH01 40  
CIR700-36 135  
CIR700-49 135  
CJ59H 55  
CL449A 69  
CL449AS 69  
CLT2 58  
CMCP13 79, 105  
CMS-EYE 57  
CMS-GRABBIT 57  
CMS-HOOK 57  
CMS-ROD 57  
CN9 84  
COM6 124  
COM12 124  
CS382 26  
CS3815 26  
CS3825 26  
CS51615 26  
CS51625 26  
CSVMD4 51  
CT100 58  
CT190 58  
CT300 58  
CT350 58  
CTR500 98, 140  
CVNWM2 28  
CVNWP 28  
CWDMM2 113  
CWDMM5 112  
CXLRFL 51  
CXLRFP 51  
CXLRML 51  
CXLRMP 51
- D**  
DA10-VOICE CONNECT 76  
DA43 34  
DAAMP5 126  
DAILKJ 77  
DAILKJ-C6 77  
DAS202 95  
DAT103 94  
DCB 23  
DCC225 124  
DCC304 124  
DCC404 124  
DE1-10 86  
DE1-14 86  
DE1-18 86  
DE1-22 86  
DE2-10 86  
DE2-14 86  
DE2-18 86  
DE2-22 86  
DE4-12 86  
DE4-14 86  
DE4-18 86  
DE4-22 86  
DE6-16 86  
DE6-20 86  
DE6-25 86  
DE8-16 86  
DE8-20 86  
DE8-25 86  
DG OHM COMPACT 93  
DG-OHM FULL HD 93  
DG-OHM HD 93  
DIGIT-65 142  
DKG-GF-B 24  
DKG-GF-S 24  
DKG-KIT-B 24  
DKG-KIT-S 24  
DKG-MF-B 24  
DKG-MF-S 24  
DL110 61, 80  
DL304IDC 62, 80  
DL314KR 61, 80  
DL501 59  
DL518 61  
DL702A 62, 80  
DL801F 60  
DL806H 60  
DL806J 60  
DL807 61  
DL808 61  
DL1068 61, 80  
DL2668R 62, 80  
DL5206 59  
DLA002 116  
DM36/10 86  
DM36/13 86  
DM36/16 86  
DM36/19 86  
DM37 86  
D-MATRIX-4S EVO 108  
D-MATRIX-8T 108  
DNP10 26  
DNP12 26  
DPOUVFSDP 87  
DSD4121RVPVRREADY 149  
DSQ4B 146  
DSQ4W 146  
DSR46391TB 149  
DVBS2-800CA 149  
DVMI 22  
DVRMILANO16 134  
DVRSDI2-8 134  
DVRVENEZIA4 960H 133  
DVRVENEZIA16 960H 133  
DW32 34  
DW42 34
- E**  
EC7001 53  
EC7002 53  
EC7003 53  
EC7004 53  
EC7005 54  
EC7006 54  
EC7007 54  
EC7008 54  
EC7009 54  
EC7010 54  
EC7011 54  
EC7012 54  
EC7013 54  
EC7016 54  
EC7017 54  
EC7018 54  
EC7019 54  
EC7020 54  
EC7022 54  
EC7023 54  
EC7024 54  
EC7026 54  
EC7027 54  
EM230 21  
EM280 21  
EM690 21  
EM1020 21  
EM1500 21  
EMK 21  
ES345/32 87  
ES345/39 87  
ES1008P 77  
ESV45 87  
ESV45S 87  
ESVU 87  
ESVUU 87  
EU503 69  
EU503DE 69  
EU503F 69  
EU503ISOL 69  
EU503PF 69  
EZYGUTTERMOUNT 145
- F**  
FA1-6 85  
FA1-8 85  
FA1-10 85  
FA1-12 85  
FA1-16 85  
FA1-20 85  
FA1-24 85  
FA1-30 85  
FA2-8 85  
FA2-10 85  
FA2-12 85  
FA2-16 85  
FA2-20 85  
FA2-24 85  
FA2-30 85  
FA4-10 85  
FA4-12 85  
FA4-14 85  
FA4-16 85  
FA4-18 85  
FA4-20 85  
FA4-24 85  
FA4-27 85  
FA4-30 85  
FA4-MT 86  
FA8-14 85  
FA8-16 85  
FA8-18 85  
FA8-20 85  
FA8-24 85  
FA8-27 85  
FA8-30 85  
FA7001 54  
FA7001N 54  
FA7002 54  
FA7002FA 54  
FA7004 55  
FA7006 55  
FA7013 55  
FA7014 55  
FA7015 55  
FA7016 55  
FA7017 55  
FA7018 55  
FA7019 55  
FA7022 55  
FA7023 55  
FA7024 55  
FA7025 55  
FA7026 55  
FAE50 89  
FAE60 89  
FAS1-12 86  
FAS1-15 86  
FAS2-12 86  
FAS2-15 86  
FAS4-15 86  
FAS4-25 86  
FATT3 88  
FATT6 88  
FATT6PP 88  
FATT12 88  
FATT12PP 88



# Index of Products

FATT24 88  
FATT24FP 88  
FB4 89  
FB607042A 145  
FBLKDC 90  
FBPA50 89  
FBPB50 89  
FBPC50 89  
FBPD50 89  
FBPE50 89  
FC7001B 56  
FC7002B 56  
FC7002C 56  
FC7004B 56  
FC7005 56  
FC7005L 56  
FC7006B 56  
FC7006C 56  
FC7006D 56  
FC7008B 56  
FC7008C 56  
FC7009B 56  
FC7009C 56  
FC7013C 56  
FC7014 55  
FC7016 56  
FC7017 56  
FC7018 56  
FC7019C 56  
FC7019D 56  
FC7020 56  
FC7022 56  
FC7023 56  
FC7024 56  
FC7025 56  
FC7026 56  
FCBOOT 56  
FCGB1 56  
FCV 300 93  
FDC12B 85  
FDC17B 85  
FDC23B 85  
FH1 88  
FHP12 97, 114  
FKLA 23  
FL0.5MMRRBQUAD 48  
FL3BPMH 90  
FL10FFSBQUAD 48  
FL10FMSBQUAD 48  
FL10MMRW 48  
FL15MFSB 48  
FL15MFSBQUAD 48  
FL15MFSW 48  
FL15MMSB 48  
FL15MMSW 48  
FL18FFMMW 48  
FL18FFSBQUAD 48  
FL18FMSBQUAD 48  
FL18FMSWQUAD 48  
FL18MFSBQUAD 48  
FL18MMSBQUAD 48  
FL18MMSWQUAD 48  
FLEXITILE 23  
FLRJ45F 74  
FM50FV 90  
FO-SC/APC-DEC 116  
FP2E 92, 93  
FP/FM 90  
FRPRO10 110  
FS/AU28 90

FS/FM 90  
FWM 24

## G

GAP 25  
GCG25 25  
GELCON2 77  
GELCON3 77  
GMANT2 21  
GPA32 26  
GPB39 26  
GPC43 26  
GPD50 26  
GW30/6X1.12 25  
GW180/7.90 25  
GWC3 25  
GWC5 25

## H

HC01 40  
HD1TB 139  
HD2TB 139  
HD3TB 139  
HD4TB 139  
HD6TB 139  
HD8TB 139  
HDC6IRL 41  
HDEZILOCK 41  
HDM20 45  
HDMIB1.5 45  
HDMICA3 45  
HDMIDVI 41  
HDMie0.5 45  
HDMie1.0 45  
HDMie2.0 45  
HDMie3 45  
HDMie3.0 45  
HDMie5.0 45  
HDMie8.0 45  
HDMie10 45  
HDMie15 45  
HDMIFF 41  
HDMIHV1 45  
HDMIHV2 45  
HDMIHV3 45  
HDMILP2.0 45  
HDMIMATRIX4X2 40  
HDMIMFRA 41  
HDMIRAMFA 41  
HDMIREP 40, 45  
HDMISP2 40  
HDMISP4 40  
HDMISP8 40  
HDMISP16 40  
HDMISW1X3 40  
HDMISW3 40  
HDT1500 145  
HHS242 148  
HHT651 148  
HIR434 42  
HL90 128  
HL103 128  
HL107 128  
HL108 128  
HL111 128  
HL112 128  
HL500FM 128  
HL500RAFM 128  
HL500SPLICE 128  
HL500ST 128  
HL750SL 128

HL7001 128  
HLFC6 128  
HLHT106 128  
HLPG11-PG11 128  
HLPG11-RG11 128  
HLPG111-5/8 128  
HMFB001 146  
HN14P 26  
HN38P 26  
HN316P 26  
HN516P 26  
HSB45 22  
HSB90 22  
HT0037 62, 80  
HT106A 60  
HT109 59  
HT218 58  
HT224A 60  
HT224D 60  
HT501 59  
HT507 61  
HT516A 61  
HT516B 61  
HT601B1 60  
HT807RG611 61  
HT2206F 60  
HTSPEEDTERM 62, 80  
HVS580 42  
HVS890 22  
HW13M4 26

## I

INC01 96, 146  
IREHDMI 42  
IREUSB 41  
IREUSB4 41  
IS3KV 90

## J

JBSS16 22  
JBSS 22  
JCASS-500-P3 49  
JS26A00 59

## K

K120A/.. 117  
K120L 35  
K120L/.. 117  
KA400 119  
KA800 119  
KCMU 117  
KCMU/S 117  
KCPN 118  
KD100 119  
KDTR-S 118  
KF/AU.. 117  
KFCJ21 143  
KFH21 143  
KFH22N 144  
KFM21 143  
KITKCPN5 118  
KITLPV345FRP 27  
KITVASTCARAVAN 27, 146  
KITVASTCVN2 27  
KMS 117  
KP15 119  
KP35 119  
KP62 119  
KPN42 119  
KPN51 119  
KPR41 119

KPS06 36  
KPS08 36  
KPS08F 36  
KRF15 119  
KRF45 119  
KRX 115  
KSP1-2 116  
KSP1-4 116  
KTX 115  
KW33B 118  
KW33C 118  
KW35E 118  
KW44C 118  
KX125 118

## L

LA2-20 35  
LARM 23  
LARMWH 23  
LCD201L 103  
LCDUCM 103  
LCDWA5 102  
LDA03-113N 101  
LDA03-113S 101  
LDA03-223N 101  
LDA03-223S 101  
LNB DUALAUSTAR 144  
LNBQUAD 144  
LP3F 12, 13  
LP4F 12  
LP45F 12  
LP45HV 10  
LP45NF 12  
LP345F 11  
LP345MF 11  
LP345MHV 10  
LP6363 101  
LP6448 101  
LPA13-444BL 101  
LPA13-484BL 101  
LPA13-484CBL 102  
LPA50443 101  
LPV345F 11  
LPV345HV 10  
LRA32 26  
LRB39 26  
LRC47 26  
LRD50 26

## M

M1-4/5FV 87  
M1825 21  
M1832 21  
M2425 21  
M2432 21  
M3032 21  
M3632 21  
M4532 21  
M4538 21  
MAGICSTRIP 57  
MBX5710 32  
MBX7750 33  
MD100US 38  
MD100VS 38  
MDA15U 31  
MDA15V 31  
MDA15W 31  
MDA20HT 31  
MDA20UT 31  
MDA3047 127  
MDA6587 127

# Index of Products

- ME900 21  
ME1200 21  
ME1500 21  
ME1800 21  
MEKIT 21  
MEX800/06 127  
MEX800/08 127  
MHBT 69  
MHBTW 69  
MHU25F 31  
MHU25FS 31  
MHU35F 31  
MHU35FS 31  
MHW25F 31  
MHW25FE 31  
MHW25FS 31  
MHW35F 31  
MHW35FS 31  
MHW43FS 31  
MIN/MIN 114  
ML01 126  
ML02 126  
MM214 88  
MM807 87  
MOD1BKT 37, 123  
MOD1HD 37, 123  
MP04AF 119  
MP05AF 119  
MP13AF 119  
MP45AF 119  
MS24SM 126  
MS28SM 126  
MS34SM 126  
MS38SM 126  
MS58SM 125  
MS100 126  
MS206 126  
MS512SM 125  
MS516SM 125  
MS524SM 125  
MS532SM 125  
MT510 126  
MT515 126  
MT520 126  
MVUVF 87  
MW13FR 70  
MW113A35 71  
MW113BL 71  
MW113BNC 71  
MW113BR 70  
MW113C6M 71  
MW113DVI 71  
MW113FF 70  
MW113FF2 70  
MW113FR 70  
MW113HDMI 71  
MW113KS 71  
MW113PF 71  
MW113RCA1 70  
MW113RCA2 70  
MW113RCA3 70  
MW113RGB 70  
MW113SPK 71  
MW113TOS 71  
MW113USB2 71  
MW113USB3 71  
MW113VGA 71  
MX51HLF 87  
MX61UVF 87  
MX201 87
- MX206 87  
MX208 87  
MXA0F 87
- N**  
NBNENC 79, 106  
NBNFK 106  
NG96F 92  
NG500 93  
NG754X 96  
NIITO-11 57
- O**  
OLS7315 97  
OPM6010 97  
OPSP1X2 116  
OPSP1X4 116  
OPSP1X5 116  
OPSP1X6 116  
OPSP1X8 116  
OPSP1X9 116  
OPSP1X10 116  
OPSP1X12 116  
OPTATT3DB 114, 116  
OPTATT5DB 114, 116  
OPTATT7DB 114, 116  
OPTATT10DB 114, 116  
OPTATT14DB 114, 116  
OPTATT15DB 114, 116  
OPT-RX-4MINI 112  
OPT-RX51 115  
OPT-RX54 115  
OPTRX-DT 112  
OPT-RXTV 112  
OPT-TX51 115  
OPT-TX54 115  
OPTTX-1510 111  
OPTTX-1530 111  
OPTTX-1550 111  
OPTTX-1570 111  
OPTTX-DT 111  
OT1009 47  
OT1018 47  
OT1030 47  
OT1050 47  
OT1100 47  
OT1150 47  
OT1200 47  
OTDIV 43  
OTJOIN 43  
OTMADA 43
- P**  
PA2 84  
PA3 84  
PA4 84  
PA6 84  
PA8 84  
PATCH10BRACKET 76  
PATCH108PC5E 76  
PATCH108PC6 76  
PATCH1012PC5E 76  
PATCH1012PC6 76  
PATCHCAT5E12W 76  
PATCHCAT5E24 76, 105  
PATCHCAT6A24 74  
PATCHCAT612W 76  
PATCHCAT624 76, 105  
PATT3 88  
PATT6 88  
PATT12 88
- PATT24 88  
PCCAT6.3-BLACK 75  
PCCAT6.5-BLACK 75  
PCCAT6.5-BLUE 74  
PCCAT6.5-GREEN 75  
PCCAT6.5-RED 75  
PCCAT6.5-WHITE 74  
PCCAT6.5-YELLOW 75  
PCCAT6A1 74  
PCCAT6A2 74  
PCCAT6A3 74  
PCCAT6A5 74  
PCCAT6A10 74  
PCCAT61-BLACK 75  
PCCAT61-BLUE 74  
PCCAT61-GREEN 75  
PCCAT61-RED 75  
PCCAT61-WHITE 74  
PCCAT61-YELLOW 75  
PCCAT62-BLACK 75  
PCCAT62-BLUE 74  
PCCAT62-GREEN 75  
PCCAT62-RED 75  
PCCAT62-WHITE 74  
PCCAT62-YELLOW 75  
PCCAT63-BLACK 75  
PCCAT63-BLUE 74  
PCCAT63-GREEN 75  
PCCAT63-RED 75  
PCCAT63-WHITE 74  
PCCAT63-YELLOW 75  
PCCAT65-BLACK 75  
PCCAT65-BLUE 74  
PCCAT65-GREEN 75  
PCCAT65-RED 75  
PCCAT65-WHITE 74  
PCCAT65-YELLOW 75  
PCCAT610-BLACK 75  
PCCAT610-BLUE 74  
PCCAT610-GREEN 75  
PCCAT610-RED 75  
PCCAT610-WHITE 74  
PCCAT610-YELLOW 75  
PCCAT615-BLACK 75  
PCCAT615-GREEN 75  
PCCAT615-RED 75  
PCCAT615-WHITE 74  
PCCAT615-YELLOW 75  
PCCAT620-BLACK 75  
PCCAT620-GREEN 75  
PCCAT620-RED 75  
PCCAT620-WHITE 74  
PCCAT620-YELLOW 75  
PCCATA1 74  
PENTA-85 142  
P2G 146  
PI-8AL 37  
PICA524WHITE 62  
PICA524YELLOW 62  
PICADRY 62  
PICAINK-BLACK 62  
PICAINK-BLUE 62  
PICAINK-RED 62  
PICAREFILL-WR 62  
PICAREFILL-WS 62  
PIGTAIL 116  
PIK170FDC 37  
PIK2750 37  
PK3940 74  
PLB13 100
- PLB17 100  
PLB34 100  
PLB34L 100  
PLB35L 102  
PLB44 100  
PLB45 102  
PLB46F 100  
PLB47 102  
PLBWA7 102  
PR003 114  
PR005 114  
PR010 114  
PR025 114  
PR100 114  
PRADAPTER-SC/MINI 114  
PRB1 103  
PRO1059 42, 43  
PRO1188A 43  
PRO1188AS 43  
PRO1235D 42  
PRO1235DS 42  
PRO1235DSWP 42  
PRO1254D 42, 43  
PRO1259 43  
PRO1287 43  
PRO1326 42  
PS5DCP 36  
PS12DCF 36  
PS12DCP 36  
PS14DCF 36  
PS14DCP 36  
PS17ACP 36  
PS18DCF 37  
PS22ACF 36  
PS22ACP 36  
PS24DCP 36  
PSK06 36  
PSK06F 36  
PSK08 36  
PSK08F 36  
PSK12F 36  
PSK12S 36  
PSK18F 36  
PSK18KR 36  
PSK18S 36  
PSUSBA1A 46  
PU4AF 19  
PU4F 19  
PU8F 19  
PU16F 19  
PULLCON 114  
PV2 23  
PV8 23  
PV10 23  
PVCBK 57  
PVP 23  
PVZ-60 23  
PW8018 139  
PW8050 139  
PW8204 139  
PW8208 139
- R**  
RAWM 24  
RCA90B 52  
RCA90R 52  
RCAF01B 52  
RCAF01R 52  
RCAF02B 52  
RCAF02R 52  
RCAM01B 52



# Index of Products

RCAM01R 52	SAM1075 26	SI10404 130	SP475FG 82
RCAM01Y 52	SAS2HC-G2 127	SI10808 130	SP475FPV 83
RCAM02 52	SAS3HC-G3 127	SI21616 131	SP1275FP 82
RCAM02B 52	SAS3U-G 127	SI63216 131	SP1675FP 82
RCAM02R 52	SAT2G-4 128	SIB2MWDRAHD 136	SP6125 84
RCAM03 52	SAT2G-8 128	SIB2MWDRIIP 137	SP6126 84
RCAM04B 52	SAT2G-11 128	SIB4M5IP 137	SP6127 84
RCAM04R 52	SAT2G-14 128	SIB13MAHD 136	SPK-10 49
RCAM6 52	SAT2G-17 128	SID1.3MAHD 136	SPK-12 49
RCAM59 52	SAT2G-20 128	SID2MWDRAHD 136	SPK-14 49
RCAMC6 52	SAT2G-23 128	SID2MWDRIIP 138	SPK-16 49
RCAMC59 52	SAT2G-26 128	SID2MWDRVFAHD 136	SPK-18 49
RFD2169BF 38	SAT2G-29 128	SID4M5IP 138	SPK-2224 49
RFD2169IR 38	SAT4G-8 128	SID4M5VFIP 138	SPK-2924 49
RG6/30B 48	SAT4G-11 128	SID13MAHD 136	SPK-4176 49
RG6/100B 48	SAT4G-14 128	SIG7100 121	SPKC165 44
RG6/100W 48	SAT4G-17 128	SIG7111 122	SPK-CM800 44
RG6/305B 48	SAT4G-20 128	SIG7120 120	SPK-ECS6.5 44
RG6Q/30B 49	SAT4G-23 128	SIG7121 120	SPK-ECS8 44
RG6Q/100B 49	SAT4G-26 128	SIG7282 122	SPKEWS530C 44
RG6Q/150BSIAM 49	SAT4G-29 128	SIG7282S 122	SPKEWS600 44
RG6Q/150B/SIAMFA 49	SAT4G-32 128	SIG7330 121	SPKOD5B 44
RG6Q/305B 49	SAT29D 34	SIG7340 121	SPKOD5W 44
RG6Q/305BE 49	SAT42D 34	SIG7400 122	SPK-RCSR650 44
RG6Q/305B/SPOOL 49	SATCM 145	SIG7401 122	SPK-RCSR800 44
RG6Q/305FA 49	SATFM 145	SIG7531 120	SPKWS612 44
RG6QF/305B 49	SATFMHD 145	SIG7540 120	SQ722 96, 146
RG6QF/305FA 49	SATGM 145	SIG7600-HTX 120	SRC101 43
RG6QLSZH 49	SATMM8-11 128	SIG7622 120	SS3825P 26
RG6QM/305B 49	SATMM8-14 128	SIG7624 120	STRAP-SEAL 22
RG11/BELDEN 49	SATMM8-17 128	SIG7710 121	SUVTM 84
RG11Q/305B 49	SATMM8-20 128	SIG7720 121	SUVTP 84
RG11Q/305FA 49	SATMM8-23 128	SIG7730 121	SWI4508DT 113, 125
RG11QF/305B 49	SATMM8-26 128	SIG7900 122	SWI4512DT 113, 125
RG11QF/305FA 49	SATMM8-29 128	SIG7901 123	SWI4516DT 113, 125
RG59/30B 48	SATWM 145	SIG7902 123	SWI4524DT 113, 125
RG59/100B 48	SB5-65 92	SIG7904 123	SWI4532DT 113, 125
RG59/305B 48	SB1060 26	SIG7905 122	
RG59AV3 48	SB1216 22	SIG9506S 125	<b>T</b>
RG59SEC/250B 49, 139	SB1816 22	SIG9606S 125	TB14 26
RG59SECPWR/100B 49, 139	SB2416 22	SIGMA6HDLTE 15	TB516 26
RJ12FF 78	SBC25 22	SIGMA9 15	TBS 26
RJ45FF 78	SBC32 22	SIGMAPOWERHD 15	TC870C 96
RJ45KS 68	SBC38 22	SIPTZ3X2MAHD 137	TC7001 55
RJ126P6C/SLD 78	SBF700 22	SIPTZ10X2MAHD 137	TC7002 55
RJ458P8C 78	SBF900 22	SIPTZ10X2MIP 137, 138	TE75PAL 55
RJ458P8C/100 78	SB17-312WDR 135	SISD2MAHD 136	TE75SC 55
RJ458P8C/SLD 78	SB17-922 135	SISD20MAHD 136	TERZA6HD 13
RJ458P8C/SLD/100 78	SB1628 135	SJA 146	TFM 26
RJ458P8C/TOOLLESS 78	SB1636 135	SJV6 146	THORNYDEVIL 24
RMI1812 21	SB1660 135	SP2SDP 83	T468 58
RM2716 21	SBS16 145	SP2TIP 82	T800 58
RMI 24	SBVP01 139	SP3SDP 83	TL5G1005D 77
RMT120 24	SBVP45HD 139	SP3TIP 82	TL5G1008D 77
RODKIT4MM5M 57	SC3162 26	SP4SDP 83	TL5G1016D 77
RODKIT6MM6M 57	SC316175 26	SP4TIP 82	TM20 26
RS1265 26	SC/APC-SC/APC 114, 116	SP5TIP 82	TM30 26
RS14100 26	SCR41S 144	SP6SDP 83	TM40 26
RT3 57	SE3 25	SP6TIP 82	TM50 26
RT6 57	SE4 25	SP8SDP 83	TMA20 26
	SE5 25	SP8TIP 82	TMA30 26
	SE7 25	SP22GDV 83	TMA40 26
<b>S</b>	SECP512DC1.5 138	SP32GDV 83	TMA50 26
SA162F 35	SECP512DC5A 138	SP42GDV 83	TMU/2 85
SA164F 35	SF4 90	SP52FA 126	TMU/4 85
SA504B 59	SF5 90	SP54FA 126	TORCHHEAD 72
SADC8HC-G 127	SHK-01 103	SP275F 82	TORCHHEAD-REC 72
SADC12HC-G 127	SI104T 132	SP275FG 82	TPE 119
SAM840 26	SI108T 132	SP275FPV 82	TRIKIT 25
SAM890 26	SI216T 132	SP375FPV 83	TRIKIT2 25
SAM1050 26			TRIKITCOM 25

# Index of Products

TRMF-S 25  
TRMIRON. 25  
TRMIRONCB. 25  
TRMIRONCB. 25  
TRMIRONGR. 25  
TRMRUBBER 25  
TRMTILE 25  
TRMTILE. 25  
TRMTILECB. 25  
TRMTILEGR 25  
TRMTILEGR. 25  
TS1949 60  
TS2011 60  
TVL242 28, 101  
TVR300 49

## U

UB51685 23  
UB516140 23  
UEM2 21  
USB1AA 46  
USBAL1.2Q 46  
USBAM1.2 46

## V

VASTCAM 123  
VBOFFSET 23  
VBP 23  
VGA2 47  
VGA3 47  
VGA5 47  
VGA10 47  
VGA15 47  
VGA20 47  
VGA25 47  
VGAM/F10 47  
VGAM/F15 47  
VGAM/F20 47  
VOT1/2 114  
VOT2/3 114  
VOT3/4 114  
VOT7/3 114  
VOT8/2 114  
VOT9/1 114  
VOV2 114  
VOV4 114  
VPB1 24  
VS2KIT 47  
VS2001 47  
VS2002 47  
VS2012 47  
VS2015 47  
VS2018 47  
VS2020 47  
VS2021 47  
VS2051 47

## W

WBS 69  
WCP 69  
WN316 26  
WP5 63  
WP5F 63  
WP5/ISOL 63  
WPB 63  
WPBP2 64  
WPBULLNOSEB 64  
WPBULLNOSE/FLUSH 64  
WPBULLNOSEW 64  
WPBULLRECESSB 64  
WPBULLRECESSW 64

WPBULLSLIMW 64  
WPC1 65  
WPC2 65  
WPC3 65  
WPC4 65  
WPC6 65  
WPCA1 65  
WPCA2 65  
WPCABP 65  
WPCB 65  
WPCBRUSH 64  
WPCC1 65  
WPCC2 65  
WPCC3 65  
WPCC4 65  
WPCC6 65  
WPCCS1 67  
WPCCS2 67  
WPCCS3 67  
WPCCS4 67  
WPCCS5 67  
WPCCS6 67  
WPCCSB 67  
WPCS1 65  
WPCS2 65  
WPDE 63  
WPE1 68  
WPE2 68  
WPE3 68  
WPE4 68  
WPE6 68  
WPF 63  
WPFOFFF 63  
WPFOFFRJ12 63  
WPFTAP 63  
WPM500B 68  
WPM619KC 68  
WPM619M4 68  
WPM619MM 68  
WPMBPB 68  
WPMBPGB 68  
WPMBPGR 68  
WPMBPR 68  
WPMCB 67  
WPMCBNCBNC 67  
WPMCBNCF 67  
WPMCBPGB 66  
WPMCBPGR 66  
WPMCCAT5EW 67, 77  
WPMCCAT6 67, 77  
WPMCCAT6W 67, 77  
WPMCCFF 66  
WPMCCFFA 66  
WPMCHDMI 66  
WPMCHDMIRA 66  
WPMCHDMITAIL 66  
WPMCM3 67, 77  
WPMCPF 66  
WPMCPFRA 66  
WPMCRCAF 66  
WPMCRCARCA 66  
WPMCRCASB 67  
WPMCRCASG 67  
WPMCRCASY 66  
WPMCRJ11 67, 77  
WPMCRJ45 67, 77  
WPMCS3.5 67  
WPMCSW16A 67  
WPMCUSB 67  
WPME 68

WPMFF 68  
WPMFFP 68  
WPMHDMI 68  
WPMPF 68  
WPMRF 68  
WPMRS 68  
WPMTELW 67, 77  
WPRCA2 64  
WPRCA4 64  
WPRPS01 69  
WPRPS02 69  
WPTVFM 63  
WPVCR/TV 63  
WS14ZP 26  
WS38ZP 26  
WS316ZP 26  
WS516ZPL 26  
WSC516 26



## CONTACTS

### Melbourne (Head Office):

42 Brunel Road  
Seaford, 3198  
Victoria  
Tel: (03) 9776 9222  
Fax: (03) 9776 9766  
Skype: laceys.tv

### North West Victoria & South Australia:

Allen Briant  
Tel: 0488 198 509

### Sydney:

1/18 Alfred Road  
Chipping Norton, 2170  
New South Wales  
Tel: (02) 9755 5026  
Fax: (02) 9755 5027

### Brisbane:

1/65 Parramatta Road  
Underwood, 4119  
Queensland  
Tel: (07) 3290 2410  
Fax: (07) 3290 2552

### Coffs Harbour:

4/161 Orlando Street  
Coffs Harbour, 2450  
New South Wales  
Tel: (02) 6651 6100  
Fax: (02) 6651 7022

### Launceston:

20-22 Gleadow Street  
Invermay, 7248  
Tasmania  
Tel: (03) 6331 1577  
Fax: (03) 6334 1717

### Townsville:

2/58 Pilkington Street  
Garbutt, 4814  
Queensland  
Tel: (07) 4779 3608

**Website:** [www.laceys.tv](http://www.laceys.tv)  
**E-mail:** [sales@laceys.tv](mailto:sales@laceys.tv)

Peter C. Lacey Services Pty. Ltd. trading as Laceys.tv ABN 59769668785

Copyright © 2017 Peter C. Lacey Services Pty. Ltd.

Errors and Omissions Excepted.

Produced in Australia.