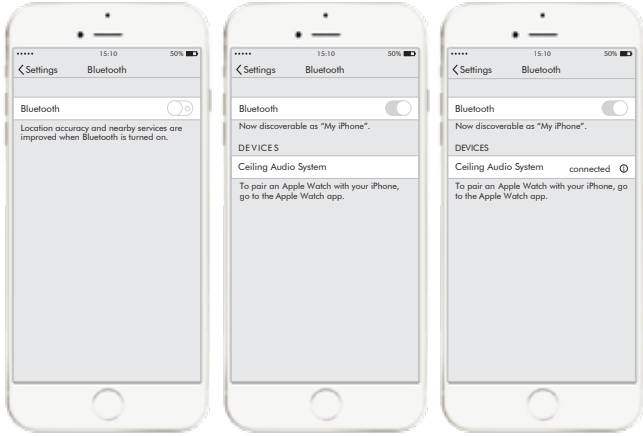


Pairing Bluetooth



Step 1 - Bluetooth

In the Settings menu of your device, enable Bluetooth.

Step 2 - Pairing

Turn on Bluetooth in device and pair with device: Ceiling Audio System
PIN: 9 9 8 9

Step 3 - Play

The speaker is now connected and ready to play music!

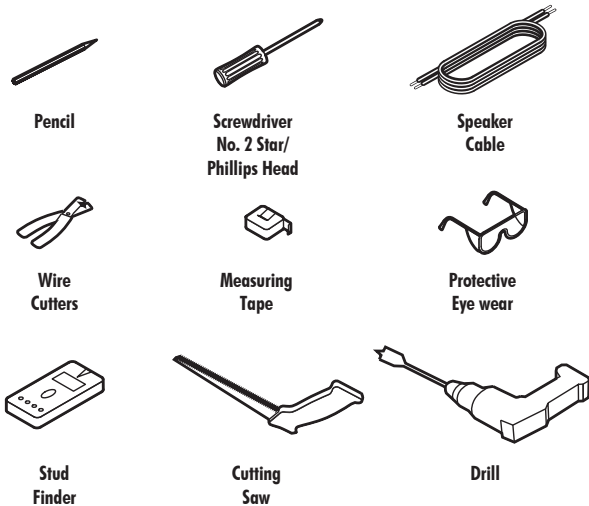
Preparation

Some of the tools and equipment you'll need to install your Wireless Ceiling Speaker System are listed below.

A ladder and a friend to assist will further simplify the task.

A template for the cut-out has been included with each set.

Tools Required



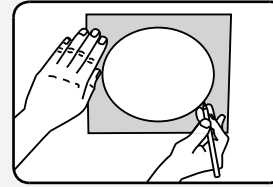
Installation

Step 1 - Mark Ceiling

Locate a suitable place to fit Master and Slave, free from battens, rafters and other obstructions.

A Stud Finder may assist.

Perforate the cardboard Mounting Hole Template, tape in place and mark the ceiling.

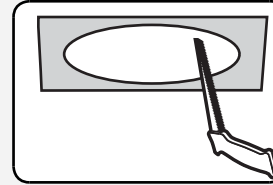


Step 2 - Cut Holes

Use 5 or 6mm drill to make a pilot hole at a point in each line.

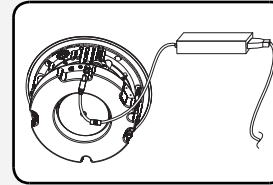
Then cut along the line by hand with a small plaster cutting saw.

Pull the speaker and power cables through.



Step 3 - Connect Master

Attach Slave speaker wires to push terminals, and power supply to Master.

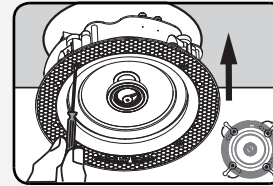


Step 4 - Fit Master

Place in hole, taking care not to touch rubber surround or cone.

With a No. 2 Star/Phillips Screwdriver;

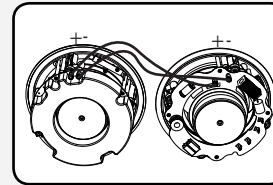
- Loosen mounting locks anti-clockwise.
- Rotate into position clockwise.
- Tighten all 4 locks clockwise.
- Fit magnetic Grille.



Step 5 - Connect Slave

Connect Slave to speaker wire from Master Speaker.

Ensure + is connect to +, to retain phasing.

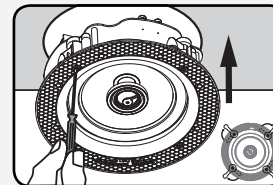


Step 6 - Fit Slave

Place in hole, taking care not to touch rubber surround or cone.

Loosen locks, rotate into position and tighten the 4 locks.

Fit the Grille.



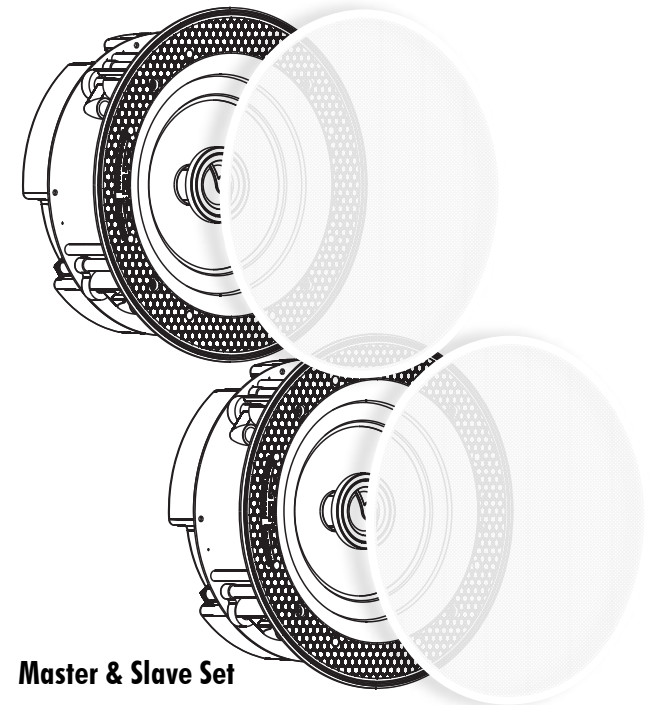
Step 7 - Power up!

Connect, test & enjoy.

Aerial
Industries **AI**

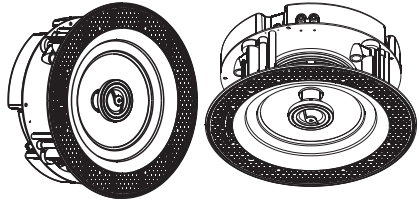
WIRELESS CEILING SPEAKER SYSTEM

Aerial Industries: HSB826

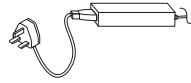


Master & Slave Set

Package Contents



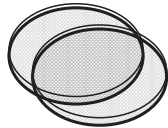
Master (Active) x1 Slave (Passive) x1



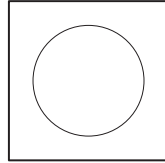
DC 24V @2.5A
Power Adapter



User
Manual



Speaker
Grilles x2



Cutout
Template

Specifications

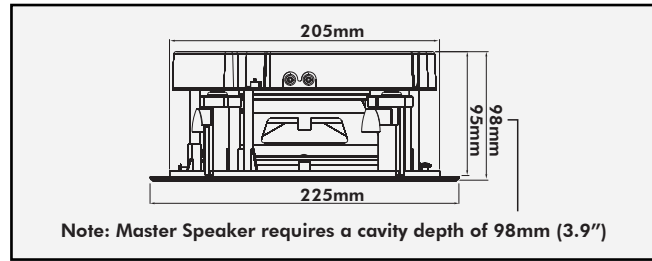
Frequency Response:	60Hz - 20kHz
Amplification Power RMS:	60W (30W Master/30W Slave)
Loudspeaker Impedance:	8 Ohms
Sensitivity (1W/1m):	90dB
Amplifier Class:	D (Digital)
Bluetooth:	V4.1
Range:	< 10m (33ft)
ID Device Name:	"Ceiling Audio System" PIN: 9 9 8 9
Power Input:	DC 24V @2.5A

Introduction

Your Wireless Ceiling Speaker System accepts input from the Bluetooth device of your choice or RCA line input for direct connection via a suitable cable.

Output are the Master and Slave integrated amplified loudspeakers.

Product Overview



1. Connection Reset Button

2. LED Status Indicator

3. Pivoting Tweeter

4. Magnets for Grille x8

5. Environmental Equalizer (+3dB)

6. Stereo and Mono Selector

7. RCA Inputs Left and Right Channels

8. Volume Limit 50% - 100%

9. Built-in Amplifier and Bluetooth Driver

10. Slave Speaker Output Right Channel + Red -Black

11. Power Input DC 24V @2.5A

12. Mounting Locks x4

13. 165mm (6.5") Kevlar Woven Cone

1. Connection Reset Button:

If system will not operate, press and hold the RESET button for around 5 seconds to reset.

IMPORTANT! Don't interrupt power whilst resetting or the device may suffer permanent damage!

2. LED Status Indications:

BLUE FLASHING

BLUE STEADY

GREEN STEADY

RED FLASHING

RED FLASHING QUICKLY

Bluetooth Paring Mode

Bluetooth Connected

AUX RCA Input Connected

Standby Mode

Amp Error

6. Stereo and Mono Selector

Stereo mode retains any Stereo sound imaging in your music and is the default mode. Mono is a mix of left and right channels can be helpful when Master or Slave operate in areas away from each other.

Change slowly and carefully.

7. RCA Inputs

Connect directly to the device of your choice, via a suitable RCA input cable. RCA left and right channel inputs select automatically when Bluetooth is inactive for more than 5 seconds. This could be useful for connecting the audio from a television or any line level audio output.

Bluetooth and RCA inputs are not active at the same time.

To protect the ears of those nearby, ensure your devices audio level is minimised when connecting.

8. Volume Limit

When 50% selected system sensitivity is reduced, use as a background music system more practical.

9. Bluetooth Connection Pairing

Apply power to the Master of your Ceiling Audio System.

Flashing BLUE LED indicates the device is ready to pair.

Switch your device's Bluetooth function ON and select 'Ceiling Audio System' and enter PIN: 9 9 8 9.

The BLUE LED will stop flashing and the speakers will play a confirmation tone when pairing is complete.

Should your device fail to pair, remove and re-insert the power cable or press reset button on the Master as described in point 1. to re-start the pairing process.

TIP:

The Amplifiers are protected against over and under voltage, short circuit and overheating.

A failure in any of these areas will cause the system to shut down automatically. It will re-start once the problem has been resolved.