

AID60 ~ AID75 ~ AID90

[Installation Guide]

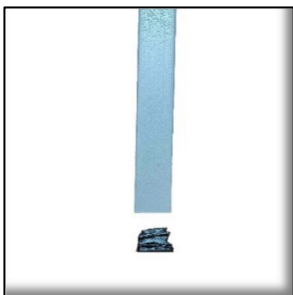
Step 1: Take the LNB holder, clamp and the 2 x M6*25mm Phillips screws and M6 nuts.



Step 2: Insert the Phillips screws, one on each side of the LNB clamp and fit the nuts in the hexagon hole of the LNB holder. Place the LNB holder onto the LNB arm (which will have a single hole) and use the M6*35mm bolt and nut to fasten them together.



Step 3: Insert the PVC Cover into the other side of the LNB arm.



Step 4: Take the reflector bracket and attach the LNB arm then fasten using the 2 x M6*35mm bolts with M6 nuts.

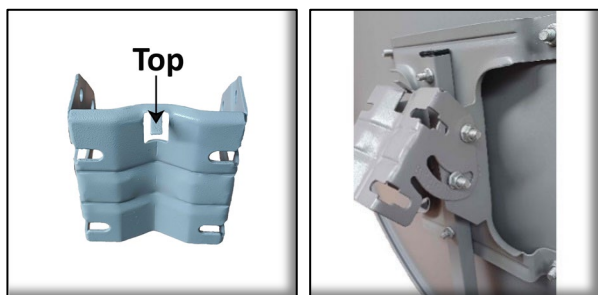


No.	Image	Description	Qty.
1		Pvc Cover	1
2		M6*35 Bolt	3
3		M6 Nut	2/3
4		M6*25 Phillips Screw	2
5		M8 Nut	12
6		M8*20 Square Neck Bolt	8
7		M8*50 Bolt	4
8		Lnb Clamp	1
9		Lnb Holder	1
10		Satellite Dish	1
11		Reflector Bracket	1
12		Elevation Bracket	1
13		U-Bolt / Mast Clamps	1/2
14		LNB Arm	1

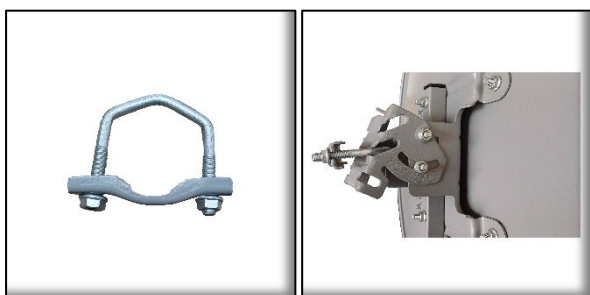
Step 5: Mount the reflector bracket to the dish using the 4 x M8*20mm square neck bolts and M8 nuts.



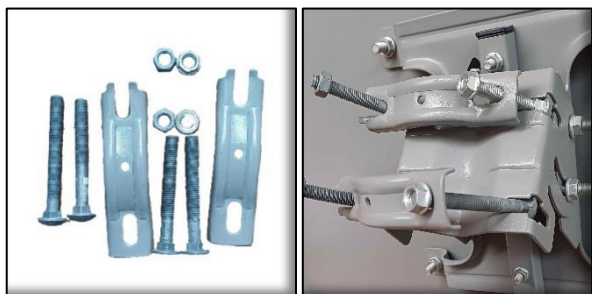
Step 6: Take the elevation bracket and mount it to the Reflector bracket securing it with the 4 x M8*50mm bolts and M8 nuts. When tightening the bolts, they only need to be finger tight, as this will be used to help with dish alignment.



Step 7 (A): AID60 & AID75 - Take the Ubolt, mast clamp and nuts and mount it into the centre position of the elevation bracket.



Step 7 (B):AID90 - Take the 2 x mast clamps and the 4 x M8*50mm square neck bolts and attach them to the elevation bracket shown below.



Completed Assembly Visualisation



Front

Back